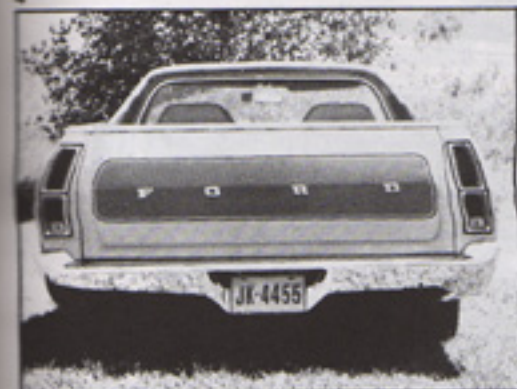
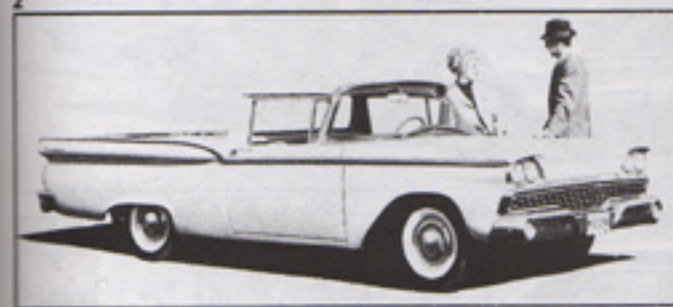


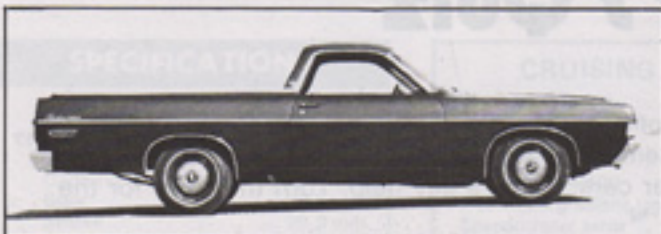
Ranchero Spotter's Quiz

Can you identify the model year?

If you're a Ford fan—and statistics show that many of you are—you should be able to identify the various Rancheros in this conglomerate of years. Remember that all Rancheros use the same front fenders, hood and grille as the same-year passenger cars, if that's any help. Turn the page for the answers, but don't call on us to settle any arguments.



Ranchero Spotter's Quiz



8



9



10



11



12



13



14



15



16



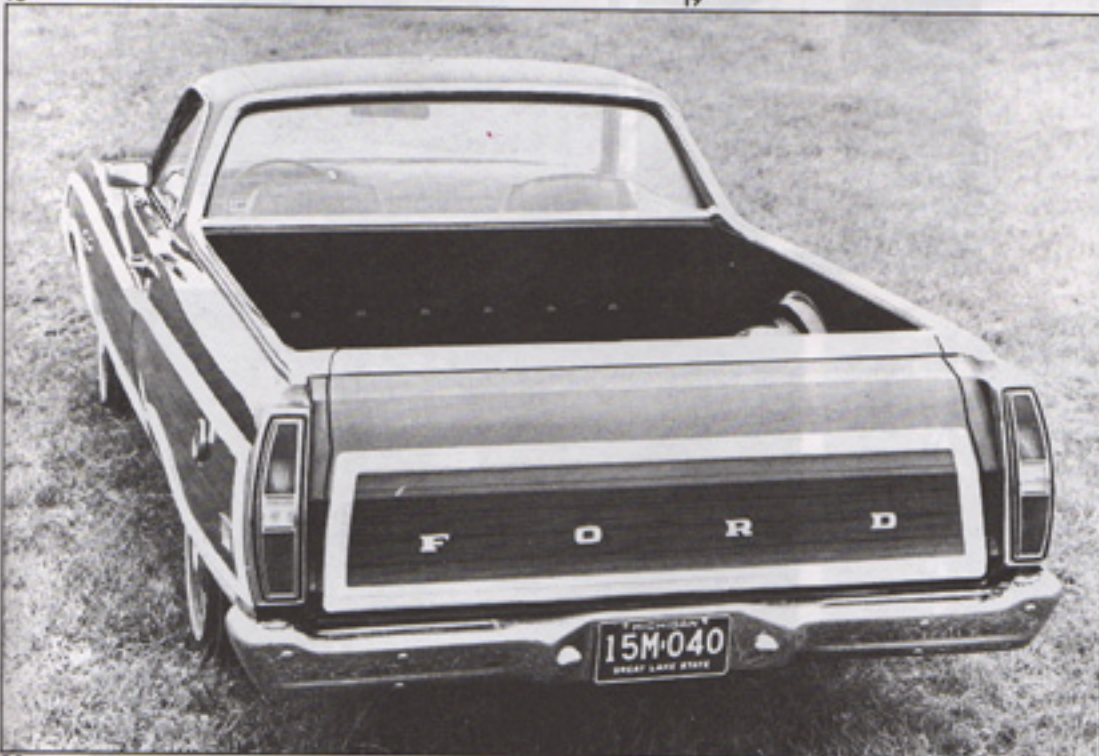
17



18



19



20



21

ANSWERS

- 21 - 1973
- 20 - 1970
- 19 - 1958
- 18 - 1972
- 17 - 1957
- 16 - 1961
- 15 - 1972
- 14 - 1964
- 13 - 1972
- 12 - 1971
- 11 - 1958
- 10 - 1971
- 9 - 1957
- 8 - 1968
- 7 - 1963
- 6 - 1972
- 5 - 1971
- 4 - 1959
- 3 - 1966
- 2 - 1969
- 1 - 1967