

1965

The 1965 Falcon Ranchero got a minor facelift on a body that had been restyled the previous year. (This would be the last year for the "small" Rancheros.) In front, the major change was a new grille with thin, horizontal bars divided by a central vertical bar on which there was a tricolor crest. The word Ford was still predominately spelled-out on the front of the hood and on the tailgate. The optional hood ornament was placed in the hood crease.

At the rear, the round taillights included chrome cross-hairs for accent. When fitted with backup lights, the white lenses were located in the center of the taillights. The word Ranchero in script letters was placed in various places on the body side depending on the trim package chosen. The familiar longhorn emblem was still located on the tailgate (where the lock would have been had the tailgate been on a station wagon).

In 1965, there were four different Ranchero models: Standard, Standard with bucket seats, Deluxe and Deluxe with bucket seats. The Standard model



Factory photo of a 1965 Ranchero with the optional two-tone paint and ornamentation scheme.

with bucket seats is the rarest Ranchero model of all with only sixteen known to have been made. Bucket-seat models could be ordered with and without a center console. Bucket seats were only \$69 more.

When you bought a Deluxe Ranchero you got such things as chrome trim around the top of the pickup box and the back of the cab, on the sides of the body, on the rocker panels and on the side-door window frames. Also included were a cigarette lighter, door switches for the dome light, added sound deadener, carpeting and a deluxe instrument panel. Vinyl seat trim in Palomino, blue, black or red with a color-coordinated steering wheel were part of the Deluxe package. (The Standard interior was Palomino vinyl.)

Colors available in 1965 included Raven Black, Rangoon Red, Wimbledon White, Vintage Burgundy, Caspian Blue, Silver Blue, Champagne Beige, Prairie Bronze, Dynasty Green, Ivy Green, Phoenician Yellow and Twilight Turquoise. On the Deluxe models you could also get colors like Tropical Turquoise,

Honey Gold and Silversmoke Gray. There was also a special two-tone paint and ornamentation scheme. This option consisted of Wimbledon White on the top of the cab and between the two bright-metal strips on the side. It was available with any solid color except Silversmoke Gray. When white was chosen as the main body color, the area between the two side strips and the roof was painted red. Only with the two-tone paint scheme did you get the twin bright-metal 1964-Futura-style trim, and it only cost \$19 extra. With single colors a single stainless strip was used that followed the body center crease.

When it came to the 1965 Falcon Ranchero's powertrain there were many significant changes. Four engines were now available. The 170-cubic-inch six-cylinder that produced 105 horsepower was now the standard powerplant. The optional 200-cubic-inch six-cylinder now put out 120 horsepower. Two V-8 engines were new for 1965, both with 289-cubic-inch displacements. The two-barrel-carburetor version produced 200 horsepower and the four-venturi version gave a sizzling 225 horsepower. These



A rare Ranchero, 1965 Deluxe with bucket seats.

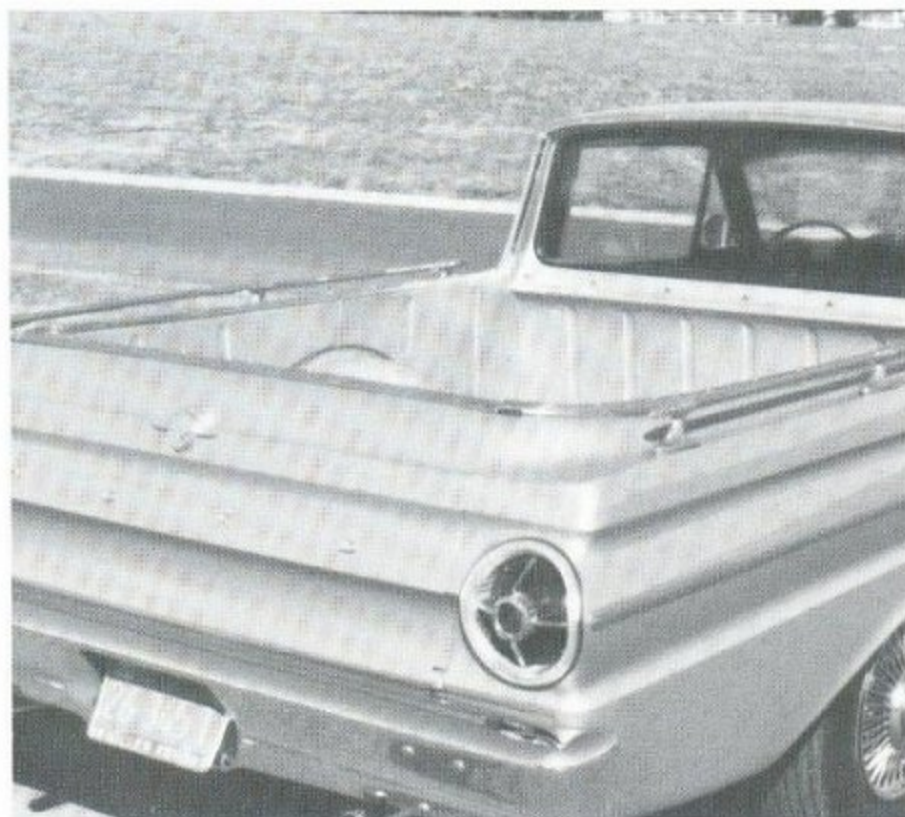
powerplants could be teamed with the standard three-speed transmission or dual-range Cruise-O-Matic. This three-speed automatic was available on the Falcon for the first time in 1965. The four-speed manual transmission was available only with the V-8's. In 1965, nine-inch brakes were used on the six-cylinder models and ten-inch brakes were used on the V-8's. The brakes were Duo-Servo and they were self adjusting. Fourteen-inch wheels were standard on the Rancheros compared to the thirteen-inch wheels that were standard on the rest of the Falcon series. In 1965 an alternator was used in place of a generator.

The range of options available on all Rancheros included power steering, air conditioning, padded dash and visors, seat belts, three different types of wheel covers, push-button radio, two-speed electric windshield wiper and washers, and white sidewall tires.

PRODUCTION		
Model	Designation	No. Produced
66A	Standard	10,539
66G	Standard with bucket seats	16
66B	Deluxe	7,734
66H	Deluxe with bucket seats	990
		19,279



Front end treatment on a 1965 Ranchero.



The chrome side rails were Ford accessories.



Tail end treatment of a 1965 Ranchero.